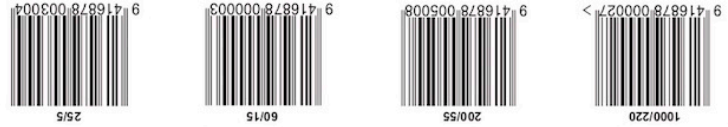


Under no circumstances shall the manufacturer be liable for any liability, loss or damage, direct, incidental, accidental or consequential arising out of the use of, or inability to use this Drumpump. Before using this Drumpump the user shall determine the suitability of the pump for its intended use and any user assumes all risks and liability whatsoever in connection therewith. If any doubt exists about whether this Drumpump can be used safely with a particular product, clarification should be sought from the manufacturer.



Use of this Ezi-action® Drumpump
This Drumpump is made from Polypropylene and Polyethylene plastics giving it a broad resistance to many chemicals.

Suitable Uses
This Ezi-action® Drumpump can be used to pump acids, alkaline and chlorine based cleaning chemicals, liquid foods, oils and lubricants and many crop chemicals including those chemicals that contain mild solvents.

If you are unsure whether this Ezi-action® Drumpump is suitable for use with a particular product, please check with the manufacturer. (Contact email: info@nzpump.com)

Manufactured by New Zealand Pump Company Group.
Patents and Copyright Apply: 583501 Australia, 206045 NZ, 264798 NZ, 4767290 USA, P-942134 Indonesia, 21727 Philippines.

9 416878 003004 25/5
9 416878 000003 60/15
9 416878 005008 200/55
9 416878 000027 1000/220

Safety Check

1. Use products only as recommended - read directions on product label before use.
2. Wear protective clothing and equipment recommended on the product label.
3. Keep out of reach of children.
4. Always replace safety strap immediately after use of pump.
5. Follow first aid directions on product label in case of an accident.
6. Avoid splashing of products.
7. DO NOT use to pump petrol/gasoline or harsh solvents.

HIGH VOLUME • LOW PRESSURE • EASY FLOW

www.nzpump.com
www.eziactionpumps.com

"SEE IT IN ACTION"

Ezi-action® DRUMPUMP

- 25/5 200/55
- 60/15 1000/220



CHEMICAL RESISTANT • FOOD SAFE • BUILT TO LAST

New Zealand Pump Company Ltd. Hamilton, New Zealand. Ph +64 7 8393838 Fax +64 7 8391193 Email: pacificsales@nzpump.com
New Zealand Pump Company (Europe) Ltd, Burton-on Trent, United Kingdom Ph +44 (0) 1283 531 499 Fax +44 (0) 1283 531 548 Email: europesales@nzpump.com

READ THIS CARD CAREFULLY BEFORE USING THIS DRUM PUMP

Ezi-action® DRUMPUMP

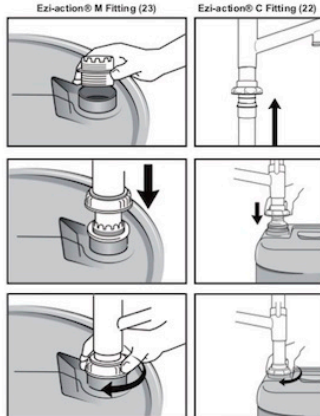
This Ezi-action® Drumpump has been designed to pump a wide range of liquid products and chemicals.

Only 2 Working Parts

The range of Ezi-action® Drumpumps are patented pistonless direct lift pumps. There is almost no mechanism to fail, jam or wear out. The Ezi-action® Drumpump has only 2 working parts in the form of 2 Flap Valves which do not take any excess load or pressure.

Installation

Ezi-action® Attachment Fittings are available for drum and container openings from around the world.



It may be necessary to loosen the Ezi-action® Cap Attachment fitting (22) from time to time to let air into the container.

Insert the shaft until the Ezi-action® Drumpump comes to rest on the bottom. Turn the Ezi-action® Drumpump to the position that you wish it to face.

SERVICING

Ezi-action® Drumpumps are fully serviceable. Should servicing be required contact your supplier for an Ezi-action® Seal Pack or Service Kit or ask about other seal options.

Using the Ezi-action® Drumpump

For best results your pumping method will need to vary as to the quantity of fluid required and the viscosity of the liquid being pumped.

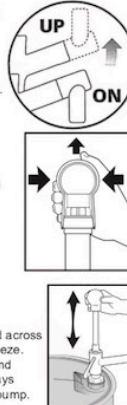
It is not necessary to use the full stroke length of the Plunger to make the pump operate efficiently. With more viscous liquids slower steadier strokes are best. If you require an exact quantity of liquid it is best to use shorter strokes as you near the quantity of liquid required.

The Outlet Nozzle (11) swivels and can be turned up to prevent any dripping, especially when pumping viscous liquids. NEVER USE THE PUMP when the Outlet nozzle is pointing up.

Unlocking the Safety Strap

The purpose of the Safety Strap is to reduce the risk of children and unwanted persons from using the pump. The manufacturer does not warrant the effectiveness of the Safety Strap, or its locking mechanism in any way. (See warnings and Warranties on the header card).

To release the Safety Strap place a hand across the breadth of the Safety Strap and squeeze. This action will raise the locking spigot and allow the Safety Strap to fold down. Always replace the Safety Strap after using the pump.



Removal and Cleaning of Ezi-action® Drumpump

Warning: Respect the toxicity of any fluid being pumped. Read the product label for advice on necessary eye, skin, inhalation protection and protective clothing. Remember: The Ezi-action® Drumpump will have a quantity of fluid contained inside it when it is removed.

1. Remove the Ezi-action® Drumpump and hold the Outlet Nozzle over a container or bucket and tip slowly backwards and forwards until the flow stops.
2. Where the Ezi-action® Drumpump has been used to pump water soluble liquids rinse the pump by standing the Drumpump in a bucket of water and pump until empty.

Caution: Be conscious of the toxicity of the fluid and where the rinse water is draining to. It is advised that it be collected for later use.

WARNING

1. When using or removing the Ezi-action® Drumpump from the container, respect the toxicity of the product being pumped. Wear required protective clothing, eye protection, gloves and appropriate footwear.
2. Never use the Ezi-action® Drumpump to pump different fluids first without giving the Ezi-action® Drumpump a thorough clean by completely disassembling the Ezi-action® Drumpump. It is recommended that a separate Ezi-action® Drumpump be used for each different product. The Ezi-action® Drumpump should not be used to pump petrol/gasoline.
3. Always replace the Safety Strap immediately after use of the Ezi-action® Drumpump.
4. Do not lock or unlock the Safety Strap in the presence of children.
5. All Ezi-action® Drumpumps and chemicals should be stored in a safe, locked area, forbidding access to children and non-authorized people.
6. Always attach the Ezi-action® Safety Measure (20) securely before using the pump.
7. Should siphoning need to be controlled ask for an Ezi-action® Non-Siphon Check Valve. (21)
8. Remove this pump after use if hazardous gases need to be contained.

PARTS BREAKDOWN

1. Ball Handle	11a. Straight Spout Outlet Nozzle	Ezi-action® Cap Attachment Fittings
2. Plunger	11b. Safety Measure Outlet Nozzle*	C55
3. Pumphead Cap	12. Foot Valve Flap	C57
4. Pumphead Scraper Seal	13. Foot Valve Holder	C63Int
5. Pumphead Seal	14. Drum Attachment Seal	C63NZ
6. Pumphead Seal Holder	15. Drum Attachment Cap	C65
7. Plunger Valve Flap	16. Drum Attachment	C69NZ
8. Plunger Valve Holder	17. Cap Attachment	C69 USA
9. Safety Strap	18. O-Ring	Aust Metal
10. Pump Body	19. Cap Locking Ring	Engl Metal
20. Ezi-action® Safety Measure (sold separately)	21. Ezi-action® Non-Siphon Check Valve and Tubing (sold separately)	PSA
		C69NZB
		C51
		Ezi-action® Drum Attachment Fittings:
		Mbsp
		M55
		MR
		M63
		M63B
		M69
		M63R
		Mbsp55
		22.
		23.

*Safety Measure Outlet Nozzle is designed to receive the Ezi-action® Safety Measure (optional).